



7.2 AFTER-SALES SERVICE

The Manufacturer is always willing to answer Customer's questions and give information on use, maintenance or installation and so on. Please follow the instructions given under paragraph 1.2 on how to request our assistance.

8 SPARE PARTS

8.1 SPARE PARTS LIST

Control unit use does not involve any expendable parts. Following is the list of available spare parts.

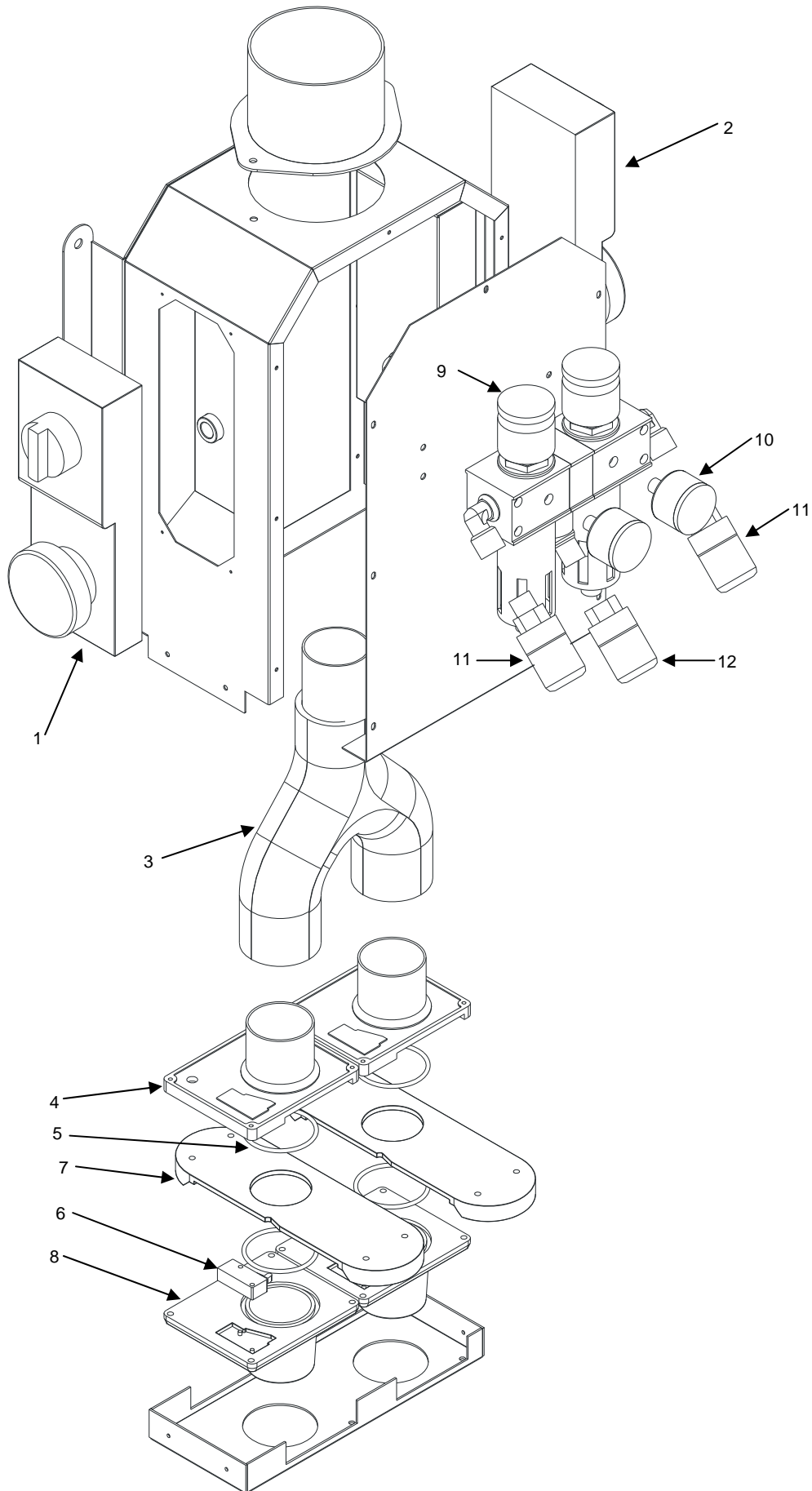
Table 8.1- A

POS.	DESCRIPTION	PART NO.
1	Interlocked power socket 230V 16A	7571
2	Interlocked power socket 400V 16A	7568
	Interlocked power socket 400V 16A 5 pins	7577
	Interlocked power socket 400V 32A	7536
	Interlocked power socket 400V 32A 5 pins	7538
3	Y-shaped conveyer	35-6-1010-ANT
4	Microswitch carrier box	35-6-1008-ANT
5	O-ring	8111
6	Microswitch	9082
7	Gate valve	35-6-1003-ANT
8	Cover	35-6-1009-ANT
9	Filter-governor 3/8"	6709
10	Pressure gauge 0-12 1/8"	K2-78
11	Safety quick cock 3/8"M	6303
12	Safety quick cock 3/8"F	6304
13	Safety quick cock 1/4"M	6303-1/4
14	Pressure regulator 1/4"	PCX-0001
15	Flanged pressure gauge Ø40 1/8"	35-59





SRM



Please, see descriptions in Table 8.1 A - page 23